

Specificical technicals





NUR HOUSE

Finestrat

Land: 600 m²
Property: 250 m²

Bedrooms: 3
Bathrooms: 3

1. Constructive details

Foundation and structure:

Reinforced concrete foundation and reinforced steel and concrete structure, according to the Spanish Technical Building Specifications (CTE - Código Técnico de la Edificación).

Facade:

The facade and enclosure was made with ceramic brick walls, according to the architect's design, a thermally insulated chamber, and partition made with plasterboard .

Exterior cement mortar coating finished with exterior paint.



Roofs:

Non-passable roof solarium surface thermal / acoustic insulation and waterproof coating.

Vertical Paraments:

Self-supporting interior walls with double plasterboard, assemblies prepared with steel frame components, painted with a smooth finish.

Ceilings:

Plasterboard ceilings painted with a smooth finish.

Bathrooms:

Wall coatings of bathrooms finished in large format ceramic stoneware tiles Acrylic plastic paint with smooth finish.

Floors:

Interior floors finished in large format ceramic tiles.
Exterior floors finished in anti-slip ceramic tiles.



2. Carpentry

Interior carpentry:

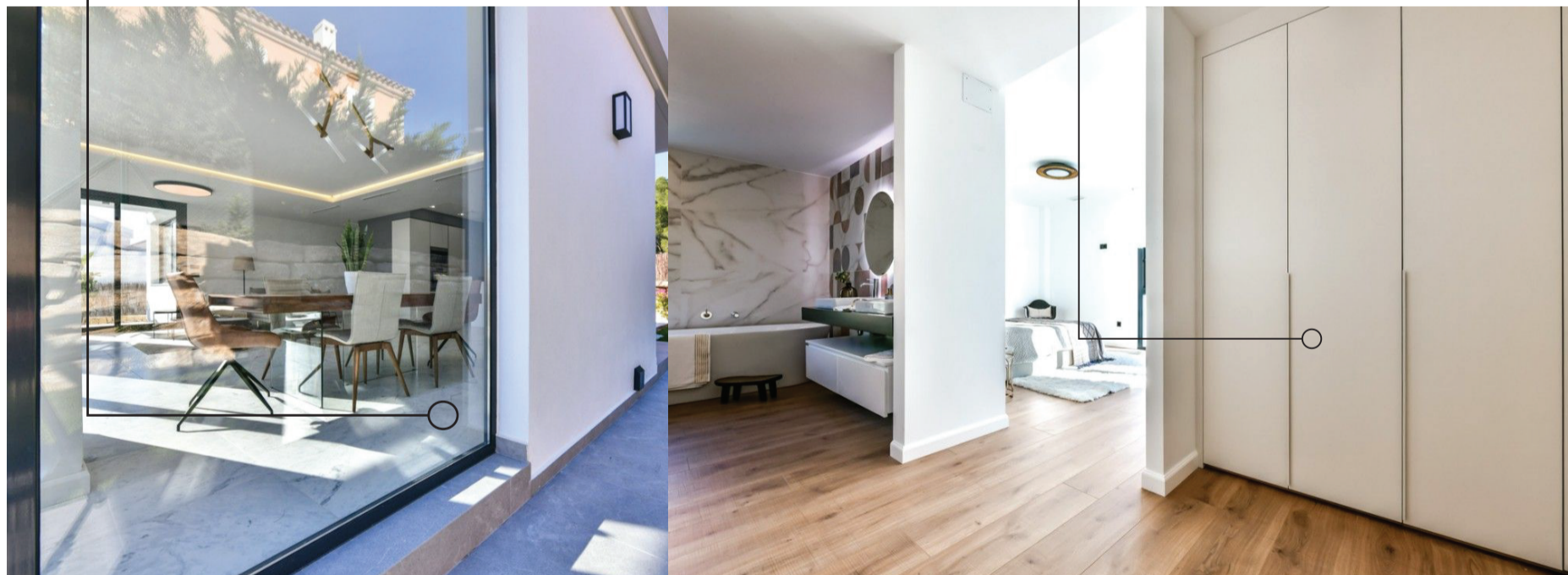
Interior doors cleverly designed finished in white or oak colour, fitted with magnetic closing system, and design handles.

Built-in custom-made Dica brand wardrobes with hinged doors finished in matching white colour. Interior finished in wood with shelves, hangers and drawers.

Exterior carpentry:

High quality Aluminium brand windows, with heat channel breakage, in textured finish in grey colour. Double glazed windows.

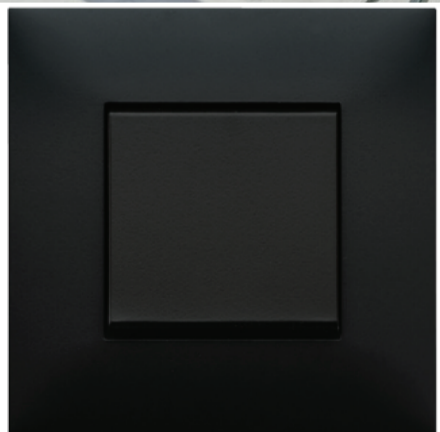
DICA.



3. Electrical installation

Electrical installation:

Electrical installation according to regulations. With mechanisms of the Legrand Valena Next firm. Video intercom in the entrance area to the house. Pre installation of electrical system for curtains. It also has a Netanno home automation installation LED luminaires and halogen LEDs with both direct and indirect light.



4. Air Conditioning

Air conditioning.

Installation of hot and cold air conditioning ducts system.

Aerothermal system for underfloor heating throughout the house and domestic hot water. Hot water accumulator with a capacity of 300 L



5. Kitchen Equipped

Kitchen Equipped with furniture of the **Dica brand** with storage distributed in shelves and drawers finished. Stainless steel sink and faucet. Induction plate cooker on island with ceramic tiles on large white format and extractor hood of the **Élica** signature built in the ceiling.

AEG signature appliance, integrated and padded in the furniture: Fridge-freezer, and dishwasher. **AEG** oven and microwave in column.



6. Bathrooms

Bathrooms. Washbasins of the firm Cielo on top of lacquered DM and illuminated retro mirrors.

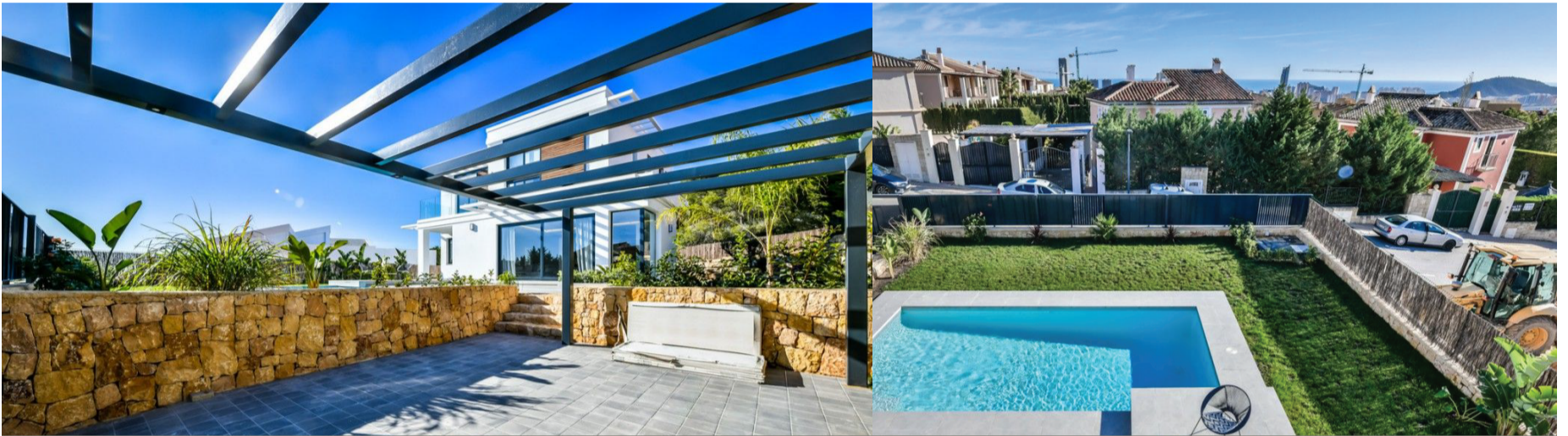
Sanitary suspended from the firm Cielo with built-in cistern and water saving mechanism. Resin shower t with cabin .

Design Exempt bathtub Cielo in main bathroom.



7.Exterior

Fenced Plot fully fenced by side and rear perimeter.
Main facade with gray lacquered iron fence on wall.
Pedestrian access door made of gray lacquered iron with intercom.
Access motorized door, and opening with remote control.
Lacquered iron carport



Lacquered iron carport

Fenced Plot
Motorized door

Swimming Pool

Pool with waterfall built with gunitted concrete and covered with clear tile. Complete and illuminated filtration system with led spotlights.



Garden

Completely finished garden with grass and gravel areas.
Ornamentation made with fruit trees and other species suitable
for the Mediterranean climate. Automatic irrigation installation.

Grass and
gravel areas





twosevenhome.com